

Anti-Engrailed 1 Rabbit Monoclonal Antibody
Catalog # ABO15803**Specification**

Anti-Engrailed 1 Rabbit Monoclonal Antibody - Product Information

Application	WB, IP, FC
Primary Accession	Q05925
Host	Rabbit
Isotype	IgG
Reactivity	Rat, Human, Mouse
Clonality	Monoclonal
Format	Liquid

Description

Anti-Engrailed 1 Rabbit Monoclonal Antibody . Tested in WB, IP, Flow Cytometry applications. This antibody reacts with Human, Mouse, Rat.

Anti-Engrailed 1 Rabbit Monoclonal Antibody - Additional Information

Gene ID 2019

Other Names

Homeobox protein engrailed-1, Homeobox protein en-1, Hu-En-1, EN1

Calculated MW

55 kDa KDa

Application Details

WB 1:500-1:2000
IP 1:50
FC 1:100

Contents

Rabbit IgG in phosphate buffered saline, pH 7.4, 150mM NaCl, 0.02% sodium azide and 50% glycerol, 0.4-0.5mg/ml BSA.

Immunogen

A synthesized peptide derived from human Engrailed 1

Purification

Affinity-chromatography

Storage

Store at -20°C for one year. For short term storage and frequent use, store at 4°C for up to one month. Avoid repeated freeze-thaw cycles.

Anti-Engrailed 1 Rabbit Monoclonal Antibody - Protein Information

Name EN1

Function

Required for proper formation of the apical ectodermal ridge and correct dorsal-ventral patterning in the limb.

Cellular Location

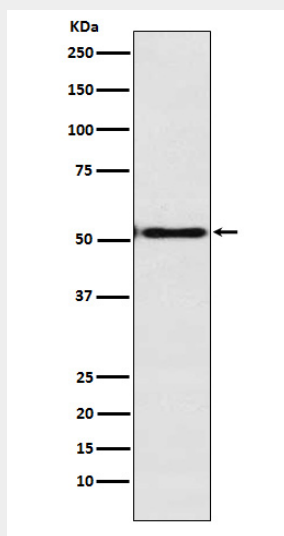
Nucleus.

Anti-Engrailed 1 Rabbit Monoclonal Antibody - Protocols

Provided below are standard protocols that you may find useful for product applications.

- [Western Blot](#)
- [Blocking Peptides](#)
- [Dot Blot](#)
- [Immunohistochemistry](#)
- [Immunofluorescence](#)
- [Immunoprecipitation](#)
- [Flow Cytometry](#)
- [Cell Culture](#)

Anti-Engrailed 1 Rabbit Monoclonal Antibody - Images



Western blot analysis of Engrailed 1 expression in 293T cell lysate.

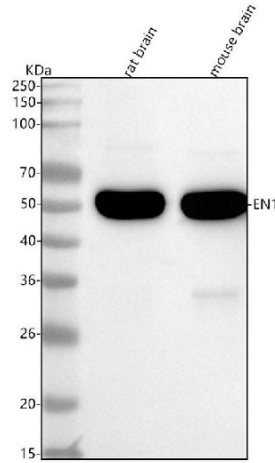


Figure 1. Western blot analysis of EN1 using anti-EN1 antibody (M05395).

Electrophoresis was performed on a 5-20% SDS-PAGE gel at 70V (Stacking gel) / 90V (Resolving gel) for 2-3 hours. The sample well of each lane was loaded with 30 ug of sample under reducing conditions.

Lane 1: rat brain tissue lysates,

Lane 2: mouse brain tissue lysates.

After electrophoresis, proteins were transferred to a nitrocellulose membrane at 150 mA for 50-90 minutes. Blocked the membrane with 5% non-fat milk/TBS for 1.5 hour at RT. The membrane was incubated with rabbit anti-EN1 antigen affinity purified monoclonal antibody (Catalog # M05395) at 1:500 overnight at 4°C, then washed with TBS-0.1%Tween 3 times with 5 minutes each and probed with a goat anti-rabbit IgG-HRP secondary antibody at a dilution of 1:500 for 1.5 hour at RT. The signal is developed using an Enhanced Chemiluminescent detection (ECL) kit (Catalog # EK1002) with Tanon 5200 system. A specific band was detected for EN1 at approximately 55 kDa. The expected band size for EN1 is at 40 kDa.